



ReGENESEEA™ LS

Cell rejuvenation | Epidermal reactivation

ACTIVE LINE

Regenesea™-LS is a rejuvenating anti-aging active ingredient obtained from Laminaria saccharina. This marine alga is exposed to conditions of extreme cold along the Canadian coasts where it is harvested. Such environmental conditions endowing marine algae with biological properties concentrated in **Regenesea™-LS**. By increasing the gene expression of proteins involved in cell rejuvenation, this active ingredient can reverse the effects of aging ensuring deep and comprehensive protection from chrono-aging. **Regenesea™-LS** teaches old skin cells to behave like when they were young.

Efficacy

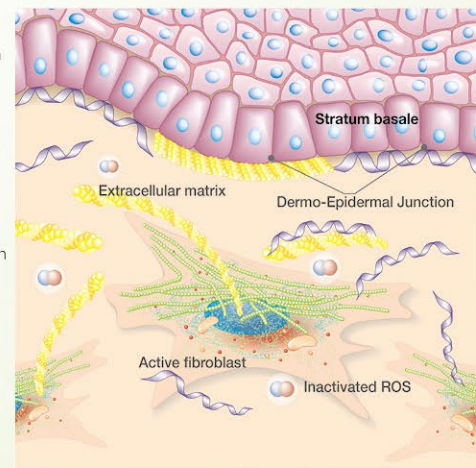
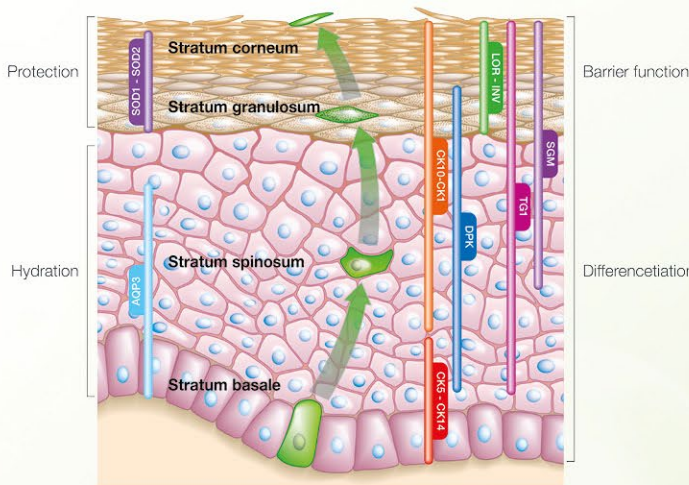
- Rejuvenation of aged cell gene expression
- Global action on the integrity of the extracellular matrix and DEJ
- Stimulation of keratinocyte differentiation and epidermal renewal
- Improvement of skin barrier function
- Increase in skin hydration
- Reduction of wrinkle density and volume
- Smoothing of skin texture
- Improvement of skin visco-elastic properties
- Inversion of chrono-aging

Technical information

- **INCI:** Glycerin, Water, Laminaria Saccharina Extract
- Water soluble
- Preservative-free
- Recommended concentration: 1-3%
- Purified by double-ultrafiltration

Applications

- Anti aging
- Anti wrinkle
- Functional make-up



COSMOS APPROVED